

Bamburgh Play Park

From



To



Overview

- Why do we need to improve the existing facilities?
- What should be the key features of a new play park?
- The process for finding a supplier
- Overview of the proposed solution.
- How much is it estimated to cost?
- How will the investment be funded?
- How can you help?
- Timeline for completion

Why do we need to improve the existing facilities?

- Activities are showing their age
- Ground has subsided and is very uneven
- Surfacing needs replacing
- Not all the available space is being used
- Open access to dogs
- The steep slope to the tennis court and the rocks are a safety hazard
- Regular inspections identify a growing need for attention (fencing etc)

Time for a change!



A facility in an iconic location in need of renewal

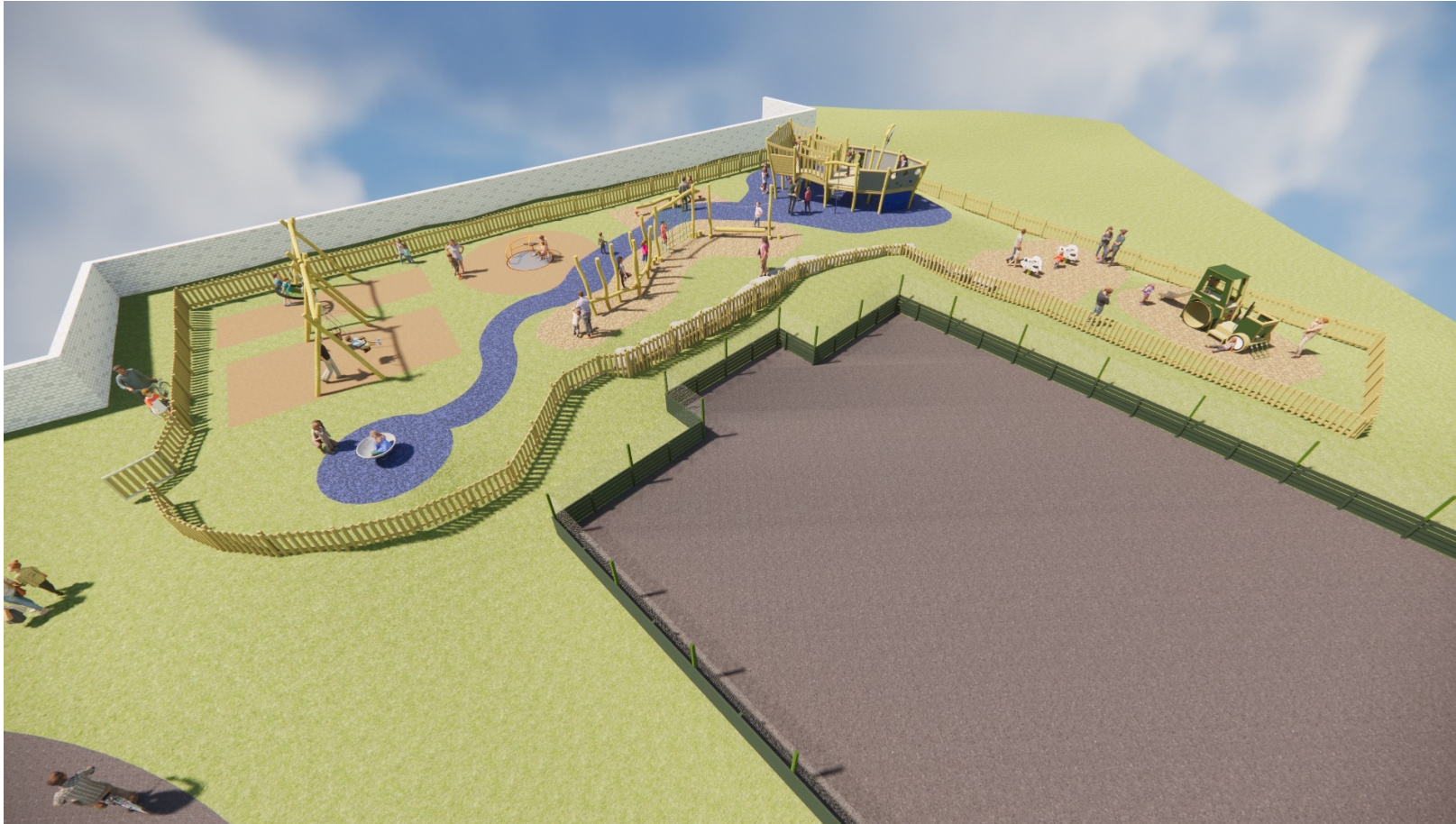
What should be the key features of a new Play park?

- Improved safety within a gated area
- Use of all available land (including behind tennis court)
- Single provider (groundwork and activities) taking complete responsibility
- Target age group 3-8 olds.
- Durable surfacing (superior quality to existing rubber matting)
- Themed activities that are consistent with the village characteristics
- Use materials/colours consistent with AONB location next to the castle.
- Addition of inclusive activities

The process for finding a supplier

- Review of products of major suppliers and those within reasonable distance of the village. Preference given to those with UK manufacturing given supply chain issues.
- Request for proposal from 4 potential suppliers whose products appeared to meet the defined criteria.
- Second request to 3 companies to align the replies and achieve comparability of the nature and extent of activities.
- Selection of a preferred supplier

Overview of the proposed solution



Pirate ship



4-seater see-saw



Inclusive roundabout



Junior swings and nest swings



Log weaver, log roller and traverse net



Tractor with slide



Spinning bowl



Bamburgh Play Area

Play Area Development

PLAN VIEW NOT TO SCALE



71M2 WETPOUR RUBBER
(COLOUR: BEIGE
DEPTH: 50MM)



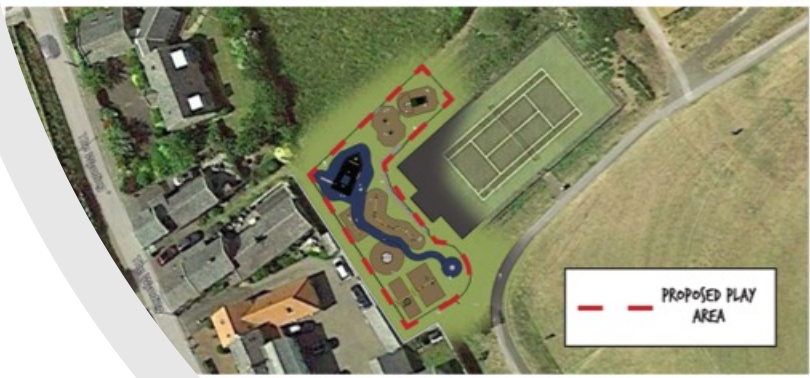
13M2 WETPOUR RUBBER
(COLOUR: BLUE
DEPTH: 50MM)



246M2 RESIN BOUND RUBBER MULCH
(COLOUR: NATURAL MIX (124M2)
BLUE (122M2)
DEPTH: 50MM)

PLAYGROUND CHECKLIST:

- A - 1.2M (W) GATE
- B - 129M 1M(H) PALED TIMBER FENCING
- C - BAMBURGH ROBINA PIRATE SHIP
- D - INCLUSIVE ROUNDABOUT
- E - ROBINA 4 SEATER SEESAW
- F - ROBINA LOG WEAVER
- G - ROBINA TRAVERSE NET
- H - ROBINA LOG ROLLER
- I - ROBINA STEPPING STONES X 4
- J - ROBINA JUNIOR SWINGS
- K - ROBINA NEST SWING
- L - ROTA ROKA SPINNING BOWL
- M - SHEEP SPRINGERS X 2
- N - LITTLE GREEN TRACTOR WITH SLIDE
- o - RE-LOCATED BOULDERS FOR RETENTION



EXISTING PATHWAY

How much is
it estimated
to cost
(£000s)?

Pirate ship	18
Inclusive roundabout	9
4-seater see saw	2
Log weaver and log roller	3
Traverse net	2
Junior swings and nest swing	5
Spinning bowl	3
Springers	2
Tractor with slide	9
Groundwork	3
Fencing and gate	10
Surfacing	29
Site Management	10
VAT (to be recovered by BPC)	20
	<hr/> 125

How will the investment be funded?

Fundraising from individuals (events, contributions, donations)

Funding applications from charitable trusts

Contributions from businesses with local operations (retail/utilities)



How can you help?

- Review and comment upon the project.
- Suggest funding sources
- Participate in fundraising activities.
- Donate!

Timeline for completion

